

Coil loading instruction

Coil as 'permitted commodity' due to possibility to damage containers and vessel's hull, unless you can follow attached procedure and it is responsibility of booking line any loss/damages caused by coil shipment but not properly followed by below procedure.

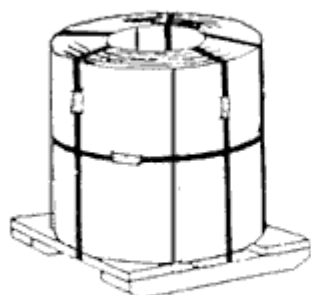
1. Weight must not exceed a weight distribution of 25,000 pounds (11340 KG) per ten square feet (or 2,500 pounds (1134 KG) per linear foot, equivalent). No exception is allowed.
2. The maximum per coil weight is limited to 6,612 lbs (3 KT). We may consider taking heavier piece for commercial reason; however, weight per coil should not exceed 12,500 lbs (5.67 KT).
3. Coiled metal products are prohibited from shipping as FAK (Freight All Kinds). It must be clearly identified on shipping papers by the appropriate STCC (Standard Transportation Commodity Code) and commodity description. In addition, the notation "COILED METAL PRODUCT" must clearly appear on all shipping papers and the waybill.
4. All coiled metal products must be shipped on a Load Roll Pallet (Not a skid), or an equivalent weight distribution system designed to distribute the weight of the coil over the container's floor surface area. Plywood as a dunnage must be placed on the container floor to protect floor structure from weight of cargo and loading equipment such as forklift. Minimum thickness of dunnage required is 1.8 cm (0.7").
5. All coils must be secured to the pallet and pallet or choking must be nailed to the container floor to prevent from cargo shift during rail and sea transportation. In case multiple pieces of coils are stuffed in the container, weight must be distributed evenly to the container floor to avoid "nose heavy" or "tail heavy" in order to lift container safely by top-lifter and/or gantry crane.
6. All coiled metal shipments must be shipped in a container that is suitable for the shipment of concentrated loads. The use of aluminum containers for the shipment of metal coils is prohibited.

COIL BASE PACKAGE

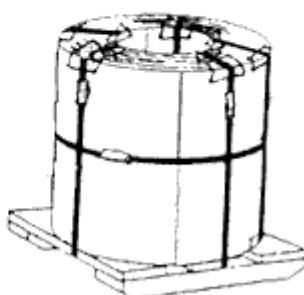
CODE 106

HOT ROLLED PRODUCTS - EYE VERTICAL SKELETON PLATFORM PACKAGING

BASE COIL (CODE 100)
1 - 1/4" Bands



BASE COIL (CODE 101)
1 - 1/4" Bands



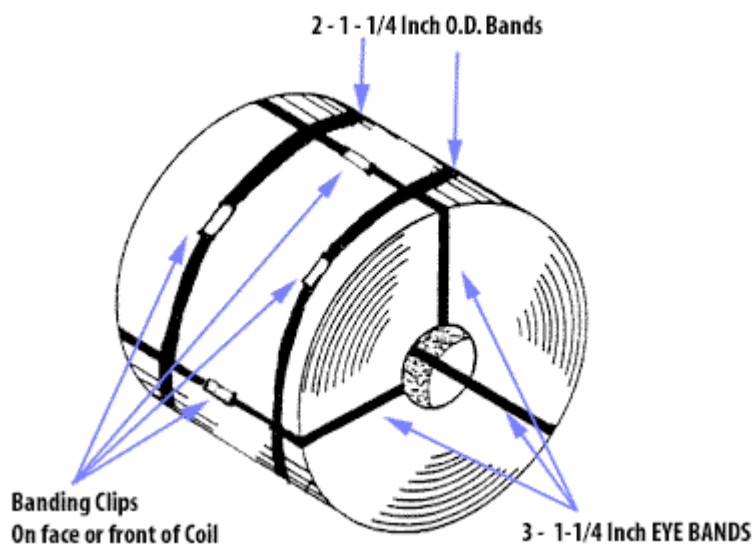
PACKAGE DESCRIPTION:

3 ID AND 1 OD BANDS - EDGE
PROTECTORS OR NO EDGE
PROTECTORS - EYE VERTICAL
-
SKELETON PLATFORM
COIL SECURES TO PLATFORM
WITH 1-1/4" BANDS

COIL BASE PACKAGE

CODE 99

STANDARD PACKAGING FOR ALL HI-CARBON AND ALLOY COILS



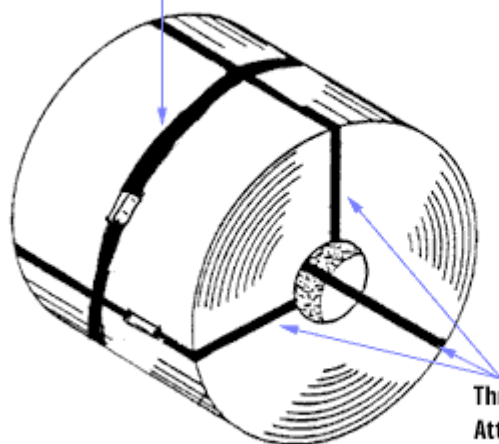
PACKAGE DESCRIPTION:

3 ID AND 2 OD BANDS - CLIPS
ON FACE OF COIL - NO EDGE
PROTECTORS

COIL BASE PACKAGE

CODE 100

One Center Circumference Band With Seals



Three Eye Bands (Through Coil I.D.)
Attempt to Space 120 Degrees Apart

PACKAGE DESCRIPTION:

3 ID AND 1 OD BANDS - NO
EDGE PROTECTORS
Standard Packaging for the 56"
Hot Mill and/or the 52" Temper
Mill

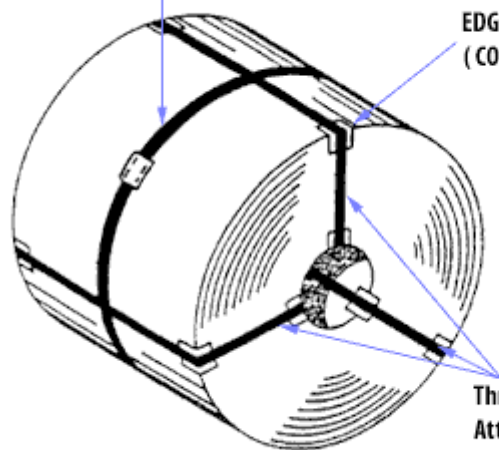
USE WHEN:

Hot Roll plain with a 30" ID and/or
Hot Roll plain temper pass with a
24" ID

COIL BASE PACKAGE

CODE 101

One Center Circumference Band With Seals



EDGE PROTECTORS
(CORNER PLATES)

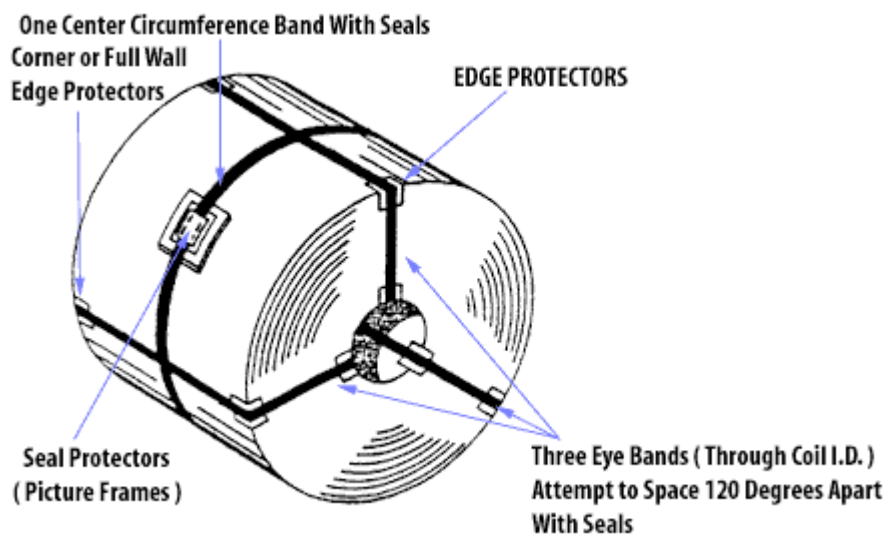
Three Eye Bands (Through Coil I.D.)
Attempt to Space 120 Degrees Apart
With Seals

PACKAGE DESCRIPTION:

3 ID AND 1 OD BANDS - EDGE
PROTECTORS
Standard Packaging for #5 and
#6 Picklers

COIL BASE PACKAGE

CODE 102



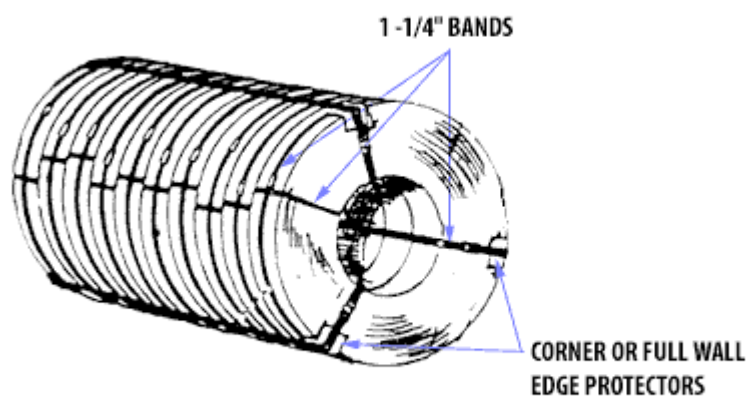
PACKAGE DESCRIPTION:

3 ID AND 1 OD BANDS - SEAL PROTECTORS - EDGE PROTECTORS
Standard Packaging for 54" Temper Mill, Galvanize

COIL BASE PACKAGE

CODE 105

MULTIPLE COIL GROUP



PACKAGE DESCRIPTION:

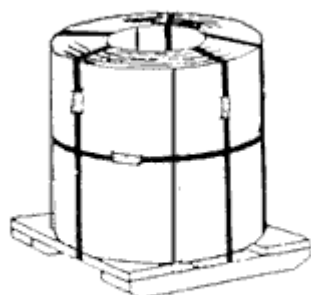
3 ID AND 1 OD BANDS PER MULT
3 ID BANDS PER COIL GROUP WITH EDGE PROTECTORS

COIL BASE PACKAGE

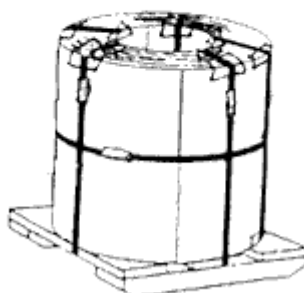
CODE 106

HOT ROLLED PRODUCTS - EYE VERTICAL SKELETON PLATFORM PACKAGING

**BASE COIL (CODE 100)
1 - 1/4" Bands**



**BASE COIL (CODE 101)
1 - 1/4" Bands**



PACKAGE

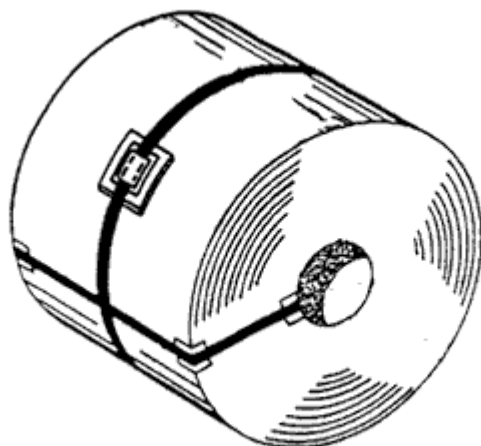
DESCRIPTION:

3 ID AND 1 OD BANDS - EDGE
PROTECTORS OR NO EDGE
PROTECTORS - EYE
VERTICAL -
SKELETON PLATFORM
COIL SECURES TO
PLATFORM WITH 1-1/4"
BANDS

COIL BASE PACKAGE

CODE 107

SILICON COIL PACKAGING



PACKAGE

DESCRIPTION:

1 ID AND 1 OD BAND - SEAL
PROTECTORS - EDGE
PROTECTORS

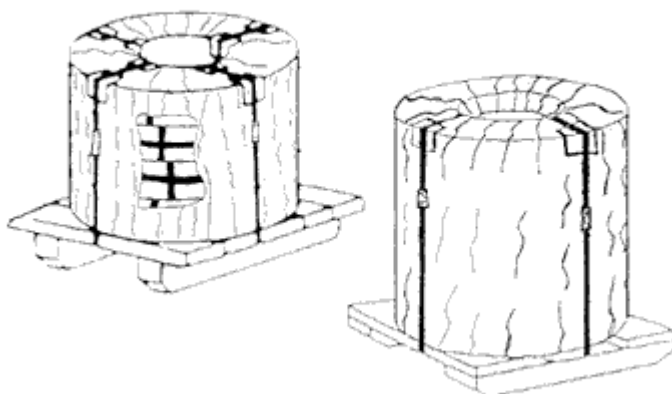
COIL BASE PACKAGE

CODE 207

HOT ROLLED PRODUCTS

PAPERWRAPPED - EYE VERTICAL SKELETON PLATFORM PACKAGING

BASE COIL PAPERWRAPPED



PACKAGE

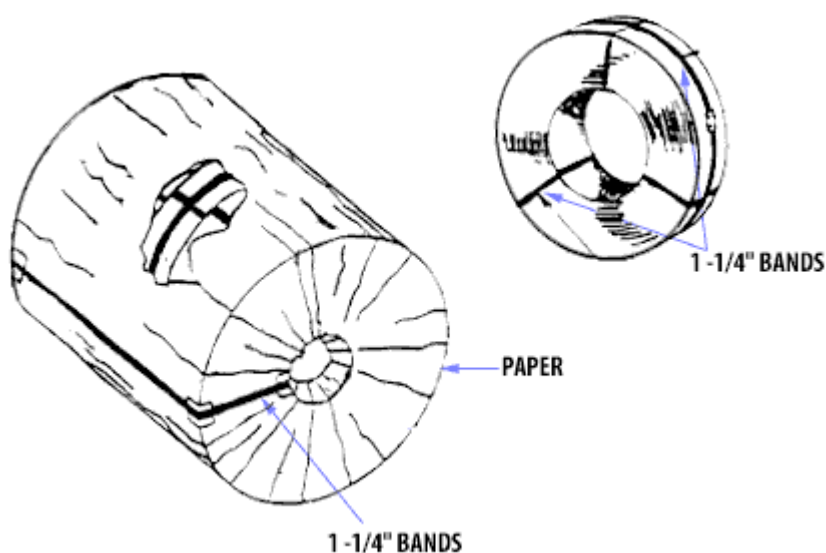
DESCRIPTION:

3 ID AND 1 OD BANDS PER
MULT- SEAL PROTECTORS -
EDGE PROTECTORS - 3 ID
BANDS PER COIL GROUP
WITH EDGE PROTECTORS -
PAPER WRAP - EYE
VERTICAL - SKELETON
PLATFORM
COIL SECURES TO
PLATFORM WITH 1-1/4"
BANDS

COIL BASE PACKAGE

CODE 208

MULTIPLE COIL GROUP



PACKAGE

DESCRIPTION:

3 ID AND 1 OD BANDS PER
MULT - 3 ID BANDS PER
COIL GROUP WITH EDGE
PROTECTORS -
PAPERWRAP

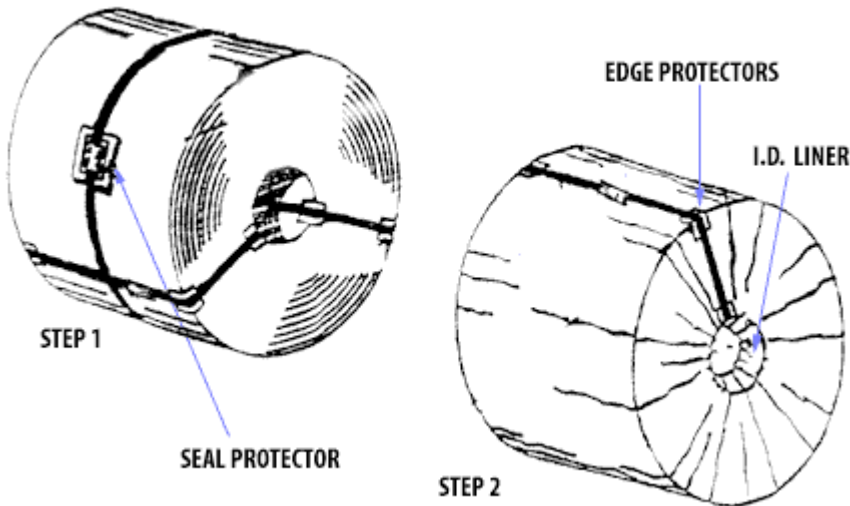
USE WHEN:

COIL GROUPS SHIPPING
FROM WCI, WITH COILS 10"
WIDE AND UNDER
REQUIRING PAPERWRAP
ALL COIL GROUPS SHIPPING FROM
O/P REQUIRING PAPERWRAP AND
ARE OVER 10" WIDE, REFER TO
PACKAGING CODE 211

COIL BASE PACKAGE

CODE 209

COATED PRODUCTS PAPERWRAP - HOT ROLLED PAPERWRAP



PACKAGE

DESCRIPTION:

MINIMUM 3 ID AND 1 OD
BANDS - SEAL
PROTECTORS - EDGE
PROTECTORS - PAPER ID
LINER - PAPERWRAP

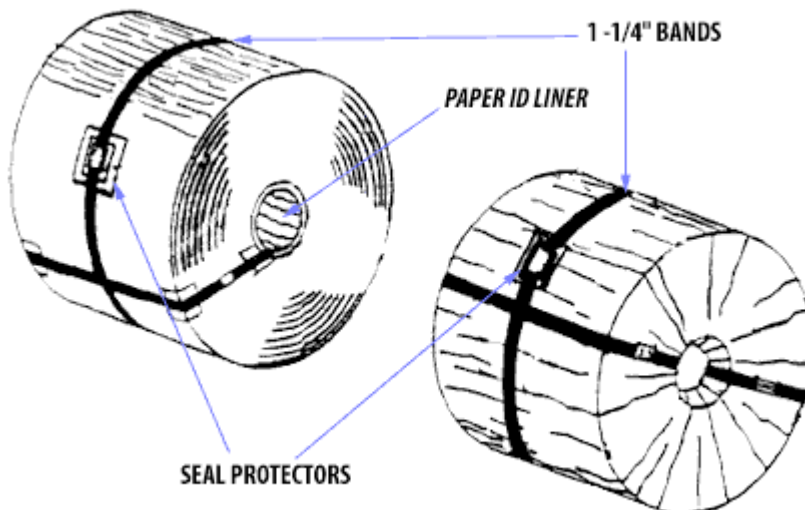
USE WHEN:

COILS ARE GALVANIZE AND
HOT ROLLED REQUIRING
PAPERWRAP

COIL BASE PACKAGE

CODE 210

COLD MILL PAPERWRAP



PACKAGE

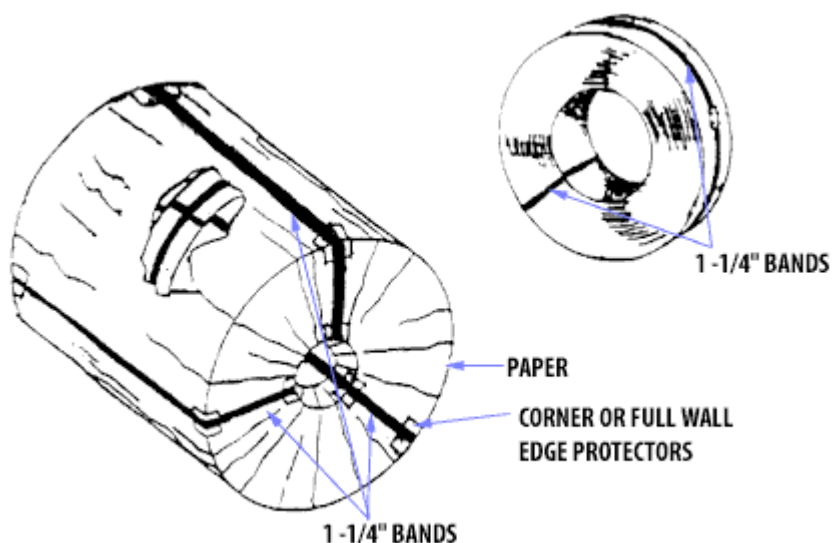
DESCRIPTION:

MINIMUM 3 ID AND 1 OD
BANDS - SEAL
PROTECTORS - EDGE
PROTECTORS - *PAPER ID*
LINER - PAPERWRAP

COIL BASE PACKAGE

CODE 211

MULTIPLE COIL GROUP



PACKAGE

DESCRIPTION:

1 ID AND 1 OD BAND PER
MULT - 3 ID BANDS PER COIL
GROUP WITH EDGE
PROTECTORS -
PAPERWRAP

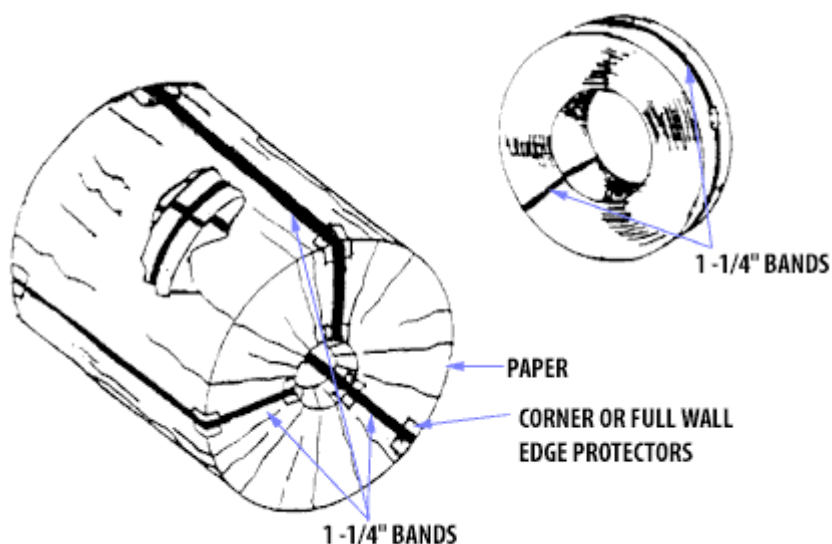
USE WHEN:

COIL GROUPS SHIPPING
FROM WCI WITH COILS
OVER 10" WIDE REQUIRING
PAPERWRAP

COIL BASE PACKAGE

CODE 211

MULTIPLE COIL GROUP



PACKAGE

DESCRIPTION:

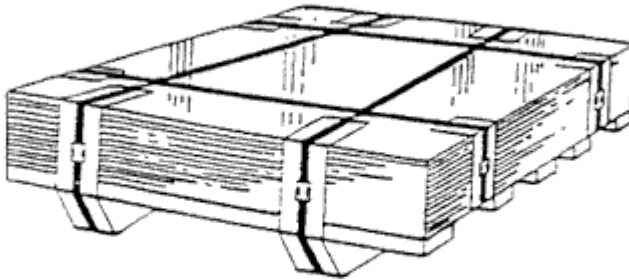
1 ID AND 1 OD BAND PER
MULT - 3 ID BANDS PER COIL
GROUP WITH EDGE
PROTECTORS -
PAPERWRAP

USE WHEN:

COIL GROUPS SHIPPING
FROM WCI WITH COILS
OVER 10" WIDE REQUIRING
PAPERWRAP

SHEET BASE PACKAGE

CODE 401



PACKAGE

DESCRIPTION:

2 X 4 SKIDS WITH SECURED
4 X 4 LENGTHWISE SKIDS -
CROSSWISE BANDS -
PAPER OVER SKIDS - EDGE
PROTECTORS